



## PRODUCT SPECIFICATION

### Product Name

English Name : CHEEZY CUTTLEFISH BALL  
Chinese Name : 芝士苏东丸

### Product Brand

Brand : NIL

### Product Descriptions

Colour : Off White with Yellowish Orange Cheese Filling  
Shape : Spherical Shape  
General : Cooked Surimi-Based Product with Cuttlefish Meat and Cheese Filling

### Ingredients / Compositions

Surimi [Fish Meat, Sugar, Egg White Powder, Stabilizer (E451i)], Cuttlefish, Cheese [Cheese (Milk, Salt, Culture, Enzyme), Vegetable Oil (Palm), Emulsifier (E452(i), E339(iii), E466, E412), Modified Starch (E1442), Skimmed Milk Powder, Cheese Flavour, Colouring (E160c), Salt], Modified Starch (E1420), Peanut Oil, Salt, Potato Starch, Sugar, Flavour Enhancer (E621), Wheat Flour, Artificial Cuttlefish Flavouring, Seasoning [Hydrolyzed Soy Protein, Yeast Extracts, Flavour Enhancer (E640, E631, E627), Acidity Regulator (E363)], Phosphate [E450(iii), E451(i), E450(i)].

### Allergen Advice

Contains : Egg, Fish, Peanut, Wheat, Soy, Milk

### Country of Origin

Product of Singapore / Made in Singapore

### Weight / Quantity

Per Piece (+/- 1g) : 25gm

### Available Packing Size

Net Weight : 1kg/ pack

### Packaging Type & Materials

Primary Packaging : LLDPE Bag

### Storage & Distribution / Shelf Life

Storage & Distribution : Frozen, -18°C and below  
Shelf Life : 18 months  
(cook before consumption)

合利发私人有限公司 HA LI FA PTE LTD  
No. 257 Pandan Loop Singapore 128434 Tel: (65) 6773 6209 Fax: (65) 6774 2010  
Email: sales@halifa-bobo.com Website: www.halifa-bobo.com





Microbiological Specifications	Tolerance Limits
Standard Plate Count	< 1.0 x 10 <sup>5</sup> g
Enterobacteriaceae	< 1.0 x 10 <sup>2</sup> g
Escherichia coli	< 20 g
Staphylococcus aureus	< 20 g
Salmonella spp	Absent in 25g
Vibrio parahaemolyticus	Absent in 25g

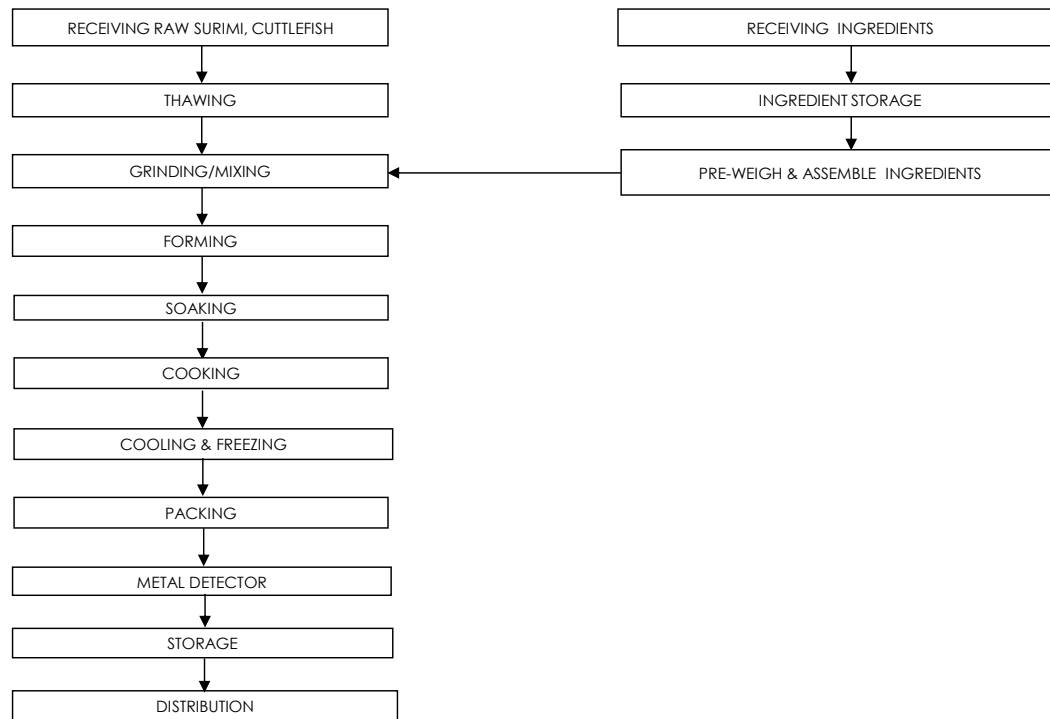
Chemical Specifications	Tolerance Limits
Arsenic (ppm)	≤ 1
Lead (ppm)	≤ 2
Mercury (ppm)	≤ 0.5
Cadmium (ppm)	≤ 1

### Food Safety Characteristic

**All packed products passed through a calibrated metal detector**

Detection Limits: Ferrous <1.5mm, Non-Ferrous <2.5mm. Stainless Steel <3.0mm

### Process Flowchart



### Target Consumer

General Public through Retailer and Super/Hypermarket

合利发私人有限公司 HA LI FA PTE LTD  
 No. 257 Pandan Loop Singapore 128434 Tel: (65) 6773 6209 Fax: (65) 6774 2010  
 Email: sales@halifa-bobo.com Website: www.halifa-bobo.com

