



PRODUCT SPECIFICATION

Product Name

English Name : Fish Noodle
Chinese Name : 鱼面

Product Brand

Brand : BoBo

Product Descriptions

Colour : Pearly White
Shape : Udon Shape
General : Cooked Surimi-Based Product with Mild Fish Note

Ingredients / Compositions

Surimi [Fish Meat, Sugar, Egg White Powder, Stabilizer (E451i)], Salt, Flavour Enhancer (E621, E631, E627), Modified Starch (E1412), Sugar, Garlic, Stabilizer (E340, E452i, E451i, E450iii), Tapioca Starch.

Allergen Advice

Contains : Fish, Egg

Country of Origin

Product of Singapore / Made in Singapore

Weight / Quantity

Per Piece (+/- 2g) : NIL

Available Packing Size

Net Weight : 180g/pack

Packaging Type & Materials

Primary Packaging : Thermoforming Film
Top: PE/PA/PP/EVOH/EVA ; Bottom: PA/EVOH/PE

Storage & Distribution / Shelf Life

Storage & Distribution : Chilled, 0°C - 4°C
Shelf Life : 30 Days
(cook before consumption)

合利发私人有限公司 HA LI FA PTE LTD
No. 257 Pandan Loop Singapore 128434 Tel: (65) 6773 6209 Fax: (65) 6774 2010
Email: sales@halifa-bobo.com Website: www.halifa-bobo.com





Microbiological Specifications	Tolerance Limits
Standard Plate Count	< 1.0 x 10 ⁵ g
Enterobacteriaceae	< 1.0 x 10 ² g
Escherichia coli	< 20 g
Staphylococcus aureus	< 20 g
Salmonella spp	Absent in 25g
Vibrio parahaemolyticus	Absent in 25g

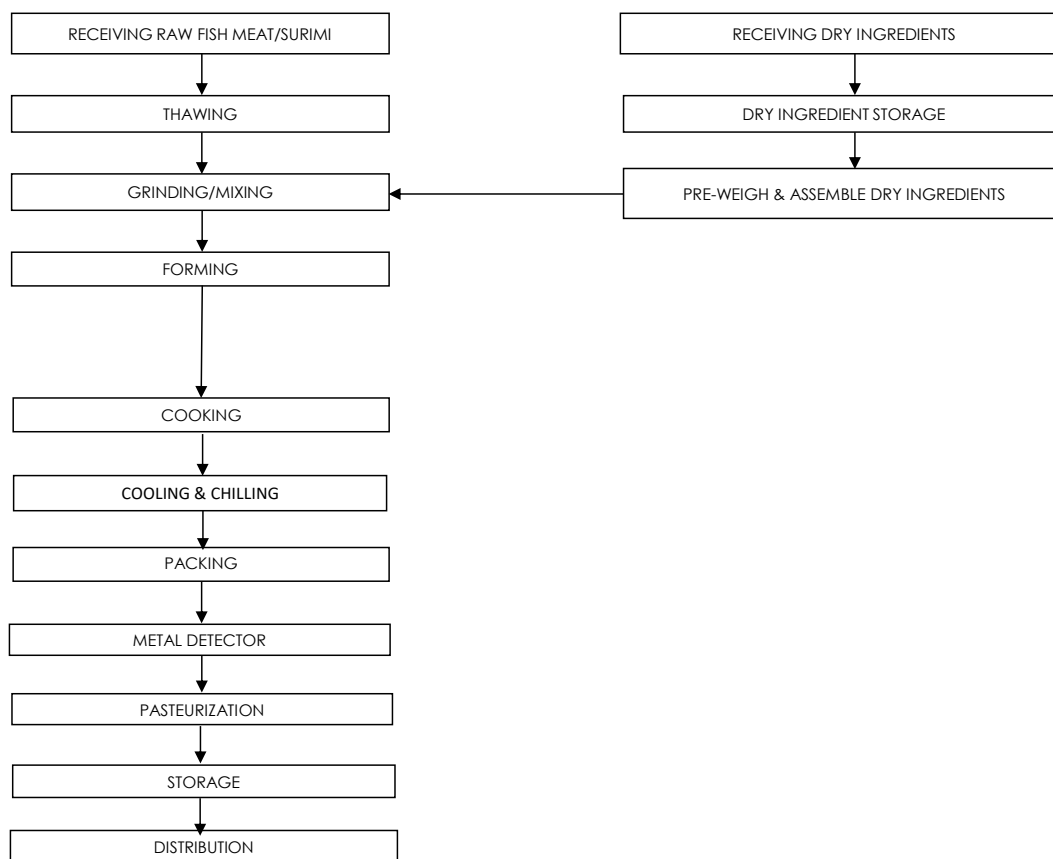
Chemical Specifications	Tolerance Limits
Arsenic (ppm)	≤1
Lead (ppm)	≤ 2
Mercury (ppm)	≤ 0.5
Cadmium (ppm)	≤ 1

Food Safety Characteristic

All packed products passed through a calibrated metal detector

Detection Limits: Ferrous <1.5mm, Non-Ferrous <2.5mm. Stainless Steel <3.0mm

Process Flowchart



Target Consumer

General Public through Retailer and Super/Hypermarket

合利发私人有限公司 HA LI FA PTE LTD
 No. 257 Pandan Loop Singapore 128434 Tel: (65) 6773 6209 Fax: (65) 6774 2010
 Email: sales@halifa-bobo.com Website: www.halifa-bobo.com

