



PRODUCT SPECIFICATION

Product Name

English Name : CUTTLFISH BALL
Chinese Name : 墨鱼丸

Product Brand

Brand : BoBo

Product Descriptions

Colour : Off White with Specks of Purple
Shape : Spherical Shape
General : Cooked Surimi-Based Product with Cuttlefish Meat

Ingredients / Compositions

Surimi [Fish Meat, Sugar, Egg White Powder, Stabilizer (E451i)], Cuttlefish Meat, Modified Starch (E1420), Peanut Oil, Salt, Sugar, Flavour Enhancer (E621), Wheat Flour, Flavouring, Seasoning [Hydrolyzed Soy Protein, Yeast Extracts, Flavour Enhancer (E640, E631, E627), Acidity Regulator (E363)], Stabilizers [E450(iii), E451 (i), E450(i)].

Allergen Advice

Contains : Egg, Fish, Peanut, Wheat, Soy

Country of Origin

Product of Singapore / Made in Singapore

Weight / Quantity

Per Piece (+/- 1g) : 21gm

Available Packing Size

Net Weight : 400g/ pack

Packaging Type & Materials

Primary Packaging : LLDPE Bag

Storage & Distribution / Shelf Life

Storage & Distribution : Frozen, -18°C and below
Shelf Life : 18 months
(cook before consumption)

合利发私人有限公司 HA LI FA PTE LTD
No. 257 Pandan Loop Singapore 128434 Tel: (65) 6773 6209 Fax: (65) 6774 2010
Email: sales@halifa-bobo.com Website: www.halifa-bobo.com





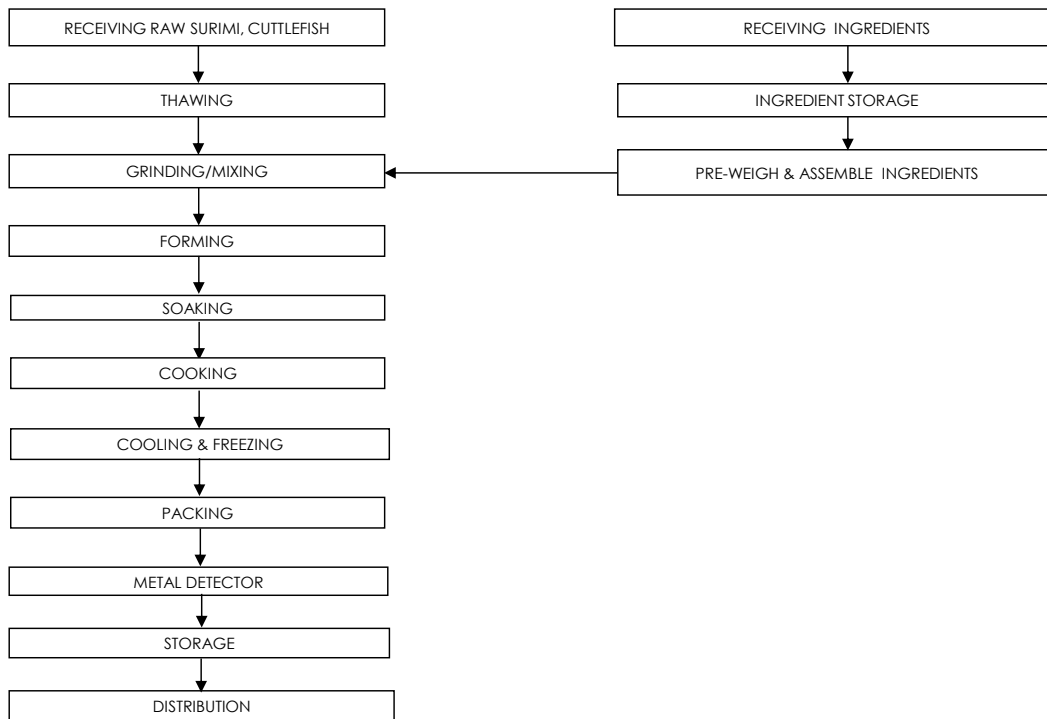
Microbiological Specifications	Tolerance Limits
Standard Plate Count	< 1.0 x 10 ⁵ g
Enterobacteriaceae	< 1.0 x 10 ² g
Escherichia coli	< 20 g
Staphylococcus aureus	< 20 g
Salmonella spp	Absent in 25g
Vibrio parahaemolyticus	Absent in 25g

Chemical Specifications	Tolerance Limits
Arsenic (ppm)	≤ 1
Lead (ppm)	≤ 2
Mercury (ppm)	≤ 0.5
Cadmium (ppm)	≤ 1

Food Safety Characteristic

All packed products passed through a calibrated metal detector
 Detection Limits: Ferrous <1.5mm, Non-Ferrous <2.5mm. Stainless Steel <3.0mm

Process Flowchart



Target Consumer

General Public through Retailer and Super/Hypermarket

合利发私人有限公司 HA LI FA PTE LTD
 No. 257 Pandan Loop Singapore 128434 Tel: (65) 6773 6209 Fax: (65) 6774 2010
 Email: sales@halifa-bobo.com Website: www.halifa-bobo.com

