



## PRODUCT SPECIFICATION

### Product Name

English Name : CHEESE SEAFOOD TOFU  
Chinese Name : 芝士海鲜豆腐

### Product Brand

Brand : BoBo

### Product Descriptions

Colour : Golden Brown  
Shape : Cylinder Shape  
General : Fried Surimi-Based Product with Cheese

### Ingredients / Compositions

Surimi [Fish Meat, Sugar, Egg White Powder, Stabilizer (E451i)], Cheese Filling {Cheese (Milk, Salt, Culture, Calves Rennet), Vegetable Shortening [Non-hydrogenated Vegetable Oil, Emulsifiers (E471, E322), Antioxidant (E306)], Skim Milk Powder, Modified Starch (E1442), Emulsifier (E452i, E450i)}, Vegetable Oil (Palm), Isolated Soy Protein, Modified Starch (E1420), Sugar, Salt, Seasoning [Hydrolyzed Vegetable Protein Powder, Flavouring, Flavour Enhancer (E621, E631, E627), Seafood Extract Powders, Yeast Extracts, Flavour Modifier (E640), Acidity Regulator (E363), Methionine.

### Allergen Advice

Contains : Fish, Egg, Milk, Soy, Crustaceans

### Country of Origin

Product of Singapore

### Weight / Quantity

Per Piece (+/- 1g) : 29gm

### Available Packing Size

Net Weight : 14pcs/ pack (400g)

### Packaging Type & Materials

Primary Packaging : Thermoforming Film  
Top: PE/PA/PP/EVOH/EVA ; Bottom: PA/EVOH/PE

### Storage & Shelf Life

Storage & Distribution : Chilled, 0°C-4°C  
Shelf Life : 30 days  
(cook before consumption)

合利发私人有限公司 HA LI FA PTE LTD  
No. 257 Pandan Loop Singapore 128434 Tel: (65) 6773 6209 Fax: (65) 6774 2010  
Email: sales@halifa-bobo.com Website: www.halifa-bobo.com





Microbiological Specifications	Tolerance Limits
Standard Plate Count	< 1.0 x 10 <sup>5</sup> g
Enterobacteriaceae	< 1.0 x 10 <sup>2</sup> g
Escherichia coli	< 20 g
Staphylococcus aureus	< 20 g
Salmonella spp	Absent in 25g
Vibrio parahaemolyticus	Absent in 25g

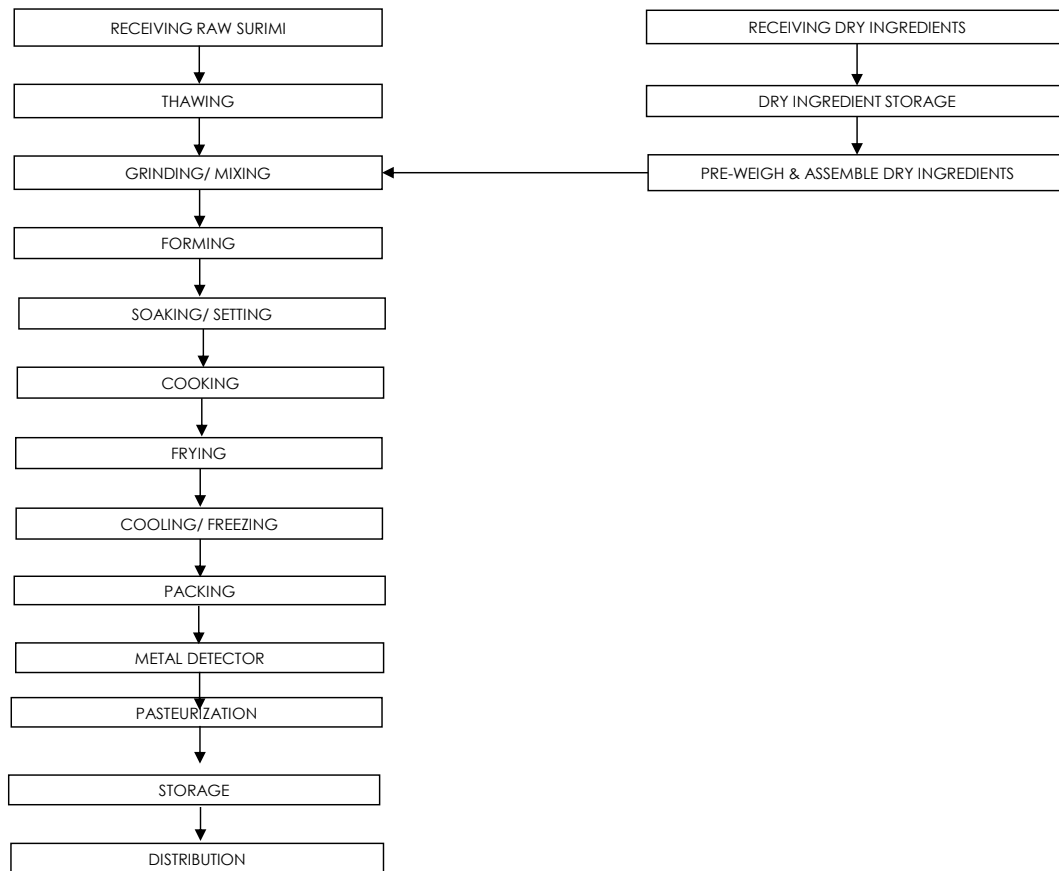
Chemical Specifications	Tolerance Limits
Arsenic (ppm)	≤ 1
Lead (ppm)	≤ 2
Mercury (ppm)	≤ 0.5
Cadmium (ppm)	≤ 1

**Food Safety Characteristic**

**All packed products passed through a calibrated metal detector**

Detection Limits: Ferrous <1.5mm, Non-Ferrous <2.5mm. Stainless Steel <3.0mm

**Process Flowchart**



**Target Consumer**

General Public through Retailer and Super/Hypermarket

合利发私人有限公司 HA LI FA PTE LTD  
 No. 257 Pandan Loop Singapore 128434 Tel: (65) 6773 6209 Fax: (65) 6774 2010  
 Email: sales@halifa-bobo.com Website: www.halifa-bobo.com

