



## PRODUCT SPECIFICATION

### Product Name

English Name : FRIED PREMIUM FISH BALL  
Chinese Name : 上炸丸

### Product Brand

Brand : BoBo

### Product Descriptions

Colour : Golden Brown  
Shape : Spherical Shape  
General : Fried Surimi-Based Product with Mild Fish Note

### Ingredients / Compositions

Surimi [Fish Meat, Sugar, Egg White Powder, Stabilizer (E452i)], Modified Starch (E1422), Salt, Flavour Enhancer (E621), Sugar, Garlic.

### Allergen Advice

Contains : Fish, Egg

### Country of Origin

Product of Singapore / Made in Singapore

### Weight / Quantity

Per Piece (+/- 2g) : 25gm

### Available Packing Size

Net Weight : 10 pcs/pack (250g)

### Packaging Type & Materials

Primary Packaging : Foam Tray with Diwrapper Film

### Storage & Distribution / Shelf Life

Storage & Distribution : Chilled, 0°C - 4°C  
Shelf Life : 10 Days  
(cook before consumption)

| Microbiological Specifications | Tolerance Limits          |
|--------------------------------|---------------------------|
| Standard Plate Count           | < 1.0 x 10 <sup>5</sup> g |
| Enterobacteriaceae             | < 1.0 x 10 <sup>2</sup> g |
| Escherichia coli               | < 20 g                    |
| Staphylococcus aureus          | < 20 g                    |
| Salmonella spp                 | Absent in 25g             |
| Vibrio parahaemolyticus        | Absent in 25g             |

合利发私人有限公司 HA LI FA PTE LTD  
No. 257 Pandan Loop Singapore 128434 Tel: (65) 6773 6209 Fax: (65) 6774 2010  
Email: sales@halifa-bobo.com Website: www.halifa-bobo.com





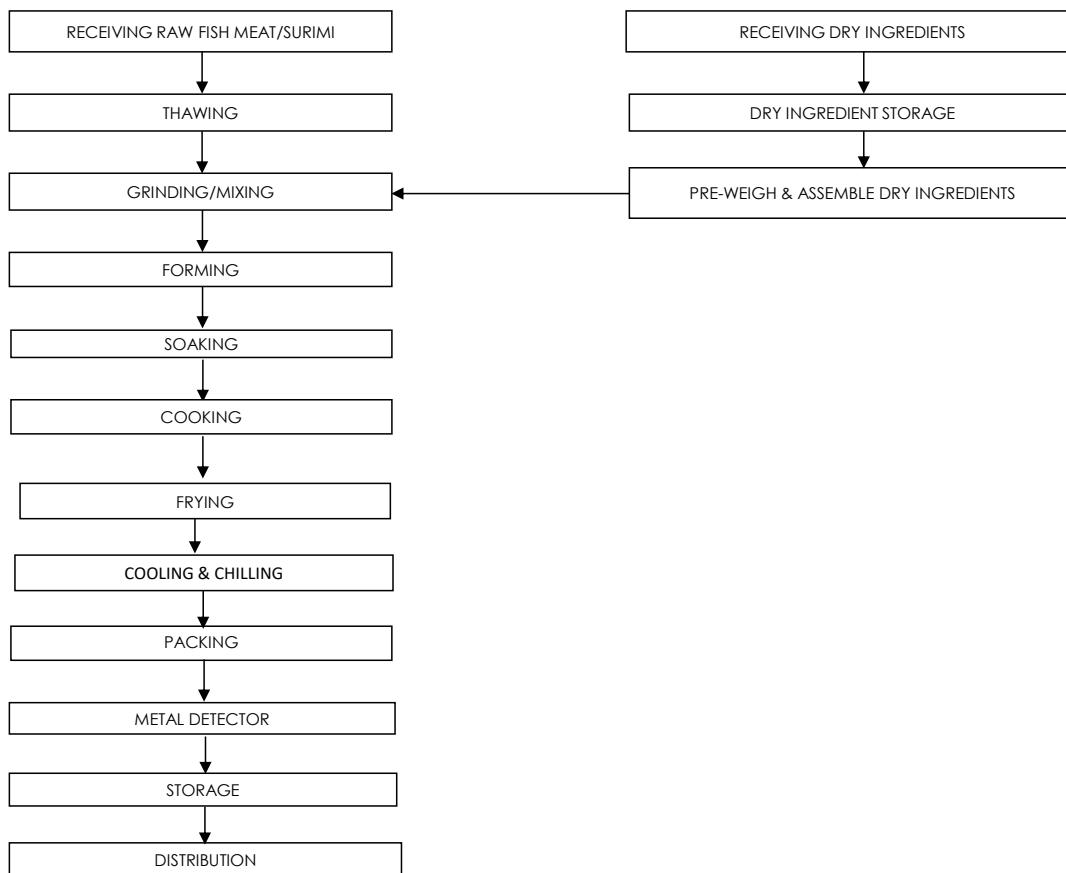
| Chemical Specifications | Tolerance Limits |
|-------------------------|------------------|
| Arsenic (ppm)           | ≤1               |
| Lead (ppm)              | ≤ 2              |
| Mercury (ppm)           | ≤ 0.5            |
| Cadmium (ppm)           | ≤ 1              |

### Food Safety Characteristic

**All packed products passed through a calibrated metal detector**

Detection Limits: Ferrous <1.5mm, Non-Ferrous <2.5mm. Stainless Steel <3.0mm

### Process Flowchart



### Target Consumer

General Public through Retailer and Super/Hypermarket

合利发私人有限公司 HA LI FA PTE LTD  
 No. 257 Pandan Loop Singapore 128434 Tel: (65) 6773 6209 Fax: (65) 6774 2010  
 Email: sales@halifa-bobo.com Website: www.halifa-bobo.com

