



PRODUCT SPECIFICATION

Product Name

English Name : A TEO CHEW FISH BALL
Chinese Name : 炸肥熊潮州丸

Product Brand

Brand : NIL

Product Descriptions

Colour : Light Grey with Specks of Red, Green and Light Brown
Shape : Spherical Shape
General : Fried Surimi-based Product with Chicken, Vegetables and Fish Sauce

Ingredients / Compositions

Surimi [Fish Meat, Sugar, Egg White Powder, Stabilizer (E452i)], Chicken Meat, Modified Starch (E1422, E1412), Vegetable (Dried Cabbage, Chilli, Celery, Onion), Sugar, Flavour Enhancer (E621), Salt, Fish Sauce (Anchovy Fish), White Pepper.

Allergen Advice

Contains : Fish, Egg

Country of Origin

Product of Singapore / Made in Singapore

Weight / Quantity

Per Piece (+/- 1g) : 30-33gm

Available Packing Size

Net Weight : 40 pcs/ pack

Packaging Type & Materials

Primary Packaging : LLDPE Bag

Storage & Distribution / Shelf Life

Storage & Distribution : Chilled, 0°C - 4°C
Shelf Life : 5 Days
(cook before consumption)

合利发私人有限公司 HA LI FA PTE LTD
No. 257 Pandan Loop Singapore 128434 Tel: (65) 6773 6209 Fax: (65) 6774 2010
Email: sales@halifa-bobo.com Website: www.halifa-bobo.com





Microbiological Specifications	Tolerance Limits
Standard Plate Count	< 1.0 x 10 ⁵ g
Enterobacteriaceae	< 1.0 x 10 ² g
Escherichia coli	< 20 g
Staphylococcus aureus	< 20 g
Salmonella spp	Absent in 25g
Vibrio parahaemolyticus	Absent in 25g

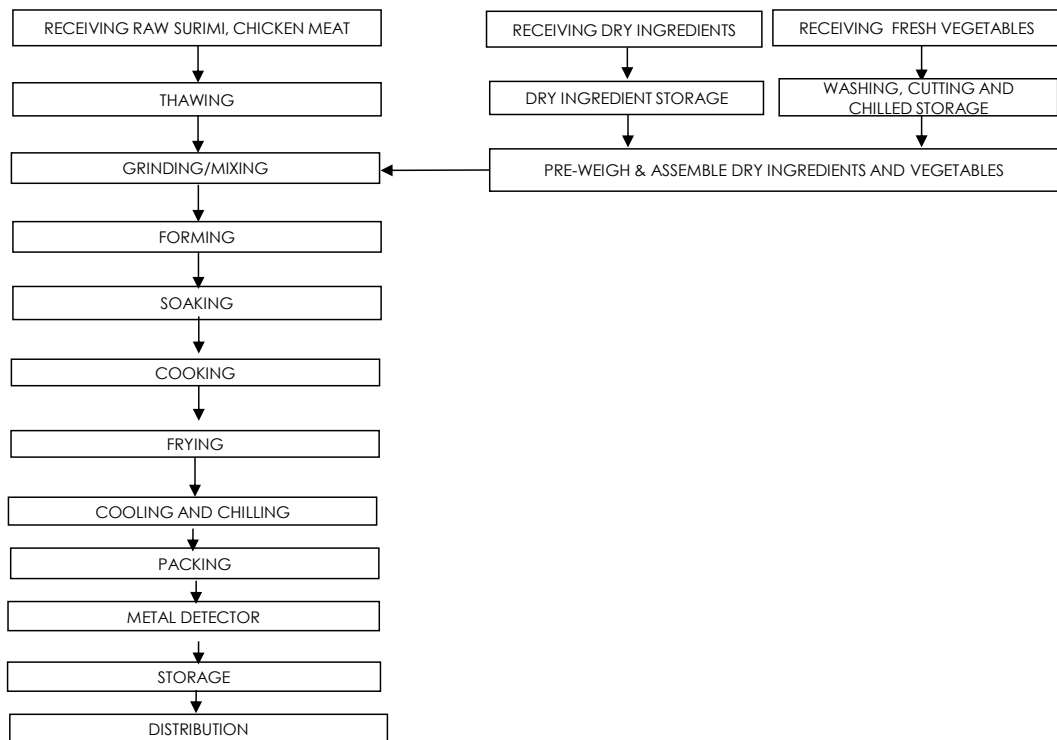
Chemical Specifications	Tolerance Limits
Arsenic (ppm)	≤ 1
Lead (ppm)	≤ 2
Mercury (ppm)	≤ 0.5
Cadmium (ppm)	≤ 1

Food Safety Characteristic

All packed products passed through a calibrated metal detector

Detection Limits: Ferrous <2.0mm, Non-Ferrous <2.5mm. Stainless Steel <3.5mm

Process Flowchart



Target Consumer

General Public through Retailer and Super/Hypermarket

合利发私人有限公司 HA LI FA PTE LTD
 No. 257 Pandan Loop Singapore 128434 Tel: (65) 6773 6209 Fax: (65) 6774 2010
 Email: sales@halifa-bobo.com Website: www.halifa-bobo.com

