



PRODUCT SPECIFICATION

Product Name

English Name : LONG CAKE
Chinese Name : LC 长上大

Product Brand

Brand : NIL

Product Descriptions

Colour : Golden Brown
Shape : Flat Cylinder Shape
General : Fried Surimi-Based Product with Mild Fish Note

Ingredients / Compositions

Surimi [Fish Meat, Sugar, Egg White Powder, Stabilizer (E452i)], Salt, Flavour Enhancer (E621), Garlic, Sugar.

Allergen Advice

Contains : Egg, Fish

Country of Origin

Product of Singapore / Made in Singapore

Weight / Quantity

Per Piece (+/- 2g) : 80gm

Available Packing Size

Net Weight : Pcs per pack depending on customer

Packaging Type & Materials

Primary Packaging : LLDPE Bag

Storage & Distribution / Shelf Life

Storage & Distribution : Chilled, 0°C - 4°C
Shelf Life : 5 Days
(cook before consumption)

合利发私人有限公司 HA LI FA PTE LTD
No. 257 Pandan Loop Singapore 128434 Tel: (65) 6773 6209 Fax: (65) 6774 2010
Email: sales@halifa-bobo.com Website: www.halifa-bobo.com



Microbiological Specifications	Tolerance Limits
Standard Plate Count	< 1.0 x 10 ⁵ g
Enterobacteriaceae	< 1.0 x 10 ² g
Escherichia coli	< 20 g
Staphylococcus aureus	< 20 g
Salmonella spp	Absent in 25g
Vibrio parahaemolyticus	Absent in 25g

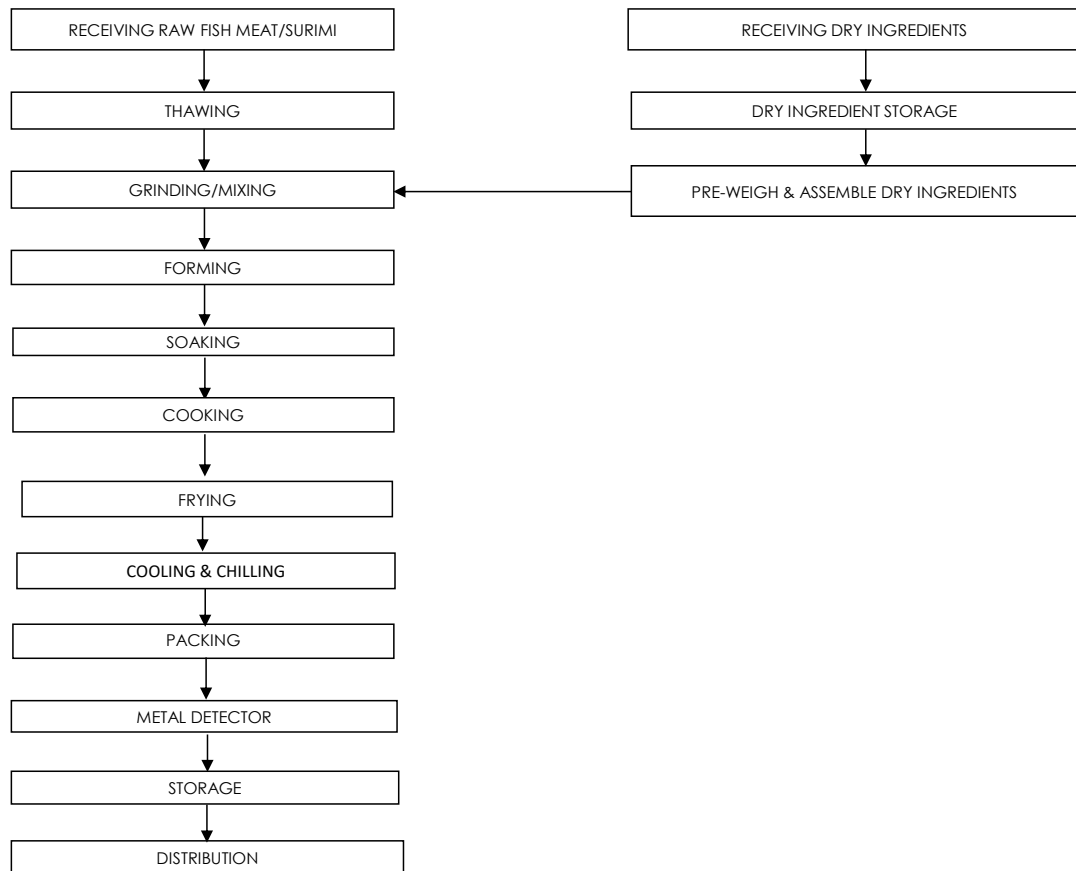
Chemical Specifications	Tolerance Limits
Arsenic (ppm)	≤ 1
Lead (ppm)	≤ 2
Mercury (ppm)	≤ 0.5
Cadmium (ppm)	≤ 1

Food Safety Characteristic

All packed products passed through a calibrated metal detector

Detection Limits: Ferrous <2.0mm, Non-Ferrous <2.5mm. Stainless Steel <3.5mm

Process Flowchart



Target Consumer

General Public through Retailer and Super/Hypermarket

合利发私人有限公司 HA LI FA PTE LTD
 No. 257 Pandan Loop Singapore 128434 Tel: (65) 6773 6209 Fax: (65) 6774 2010
 Email: sales@halifa-bobo.com Website: www.halifa-bobo.com

