



## PRODUCT SPECIFICATION

### Product Name

English Name : DARK BROWN MEDIUM LARGE PREMIUM FISH CAKE  
Chinese Name : 特黑中大

### Product Brand

Brand : NIL

### Product Descriptions

Colour : Dark Brown  
Shape : Rectangular Shape  
General : Fried Surimi-Based Product with Mild Fish Note

### Ingredients / Compositions

Surimi [Fish Meat, Sugar, Egg White Powder, Stabilizer (E452i)], Modified Starch (E1422), Salt, Flavour Enhancer (E621), Sugar, Garlic.

### Allergen Advice

Contains : Egg, Fish

### Country of Origin

Product of Singapore / Made in Singapore

### Weight / Quantity

Per Piece (+/- 2g) : 84-86gm

### Available Packing Size

Net Weight : 1kg/ pack

### Packaging Type & Materials

Primary Packaging : LLDPE Bag

### Storage & Distribution / Shelf Life

Storage & Distribution : Chilled, 0°C - 4°C  
Shelf Life : 5 Days  
(cook before consumption)

合利发私人有限公司 HA LI FA PTE LTD  
No. 257 Pandan Loop Singapore 128434 Tel: (65) 6773 6209 Fax: (65) 6774 2010  
Email: sales@halifa-bobo.com Website: www.halifa-bobo.com



Microbiological Specifications	Tolerance Limits
Standard Plate Count	< 1.0 x 10 <sup>5</sup> g
Enterobacteriaceae	< 1.0 x 10 <sup>2</sup> g
Escherichia coli	< 20 g
Staphylococcus aureus	< 20 g
Salmonella spp	Absent in 25g
Vibrio parahaemolyticus	Absent in 25g

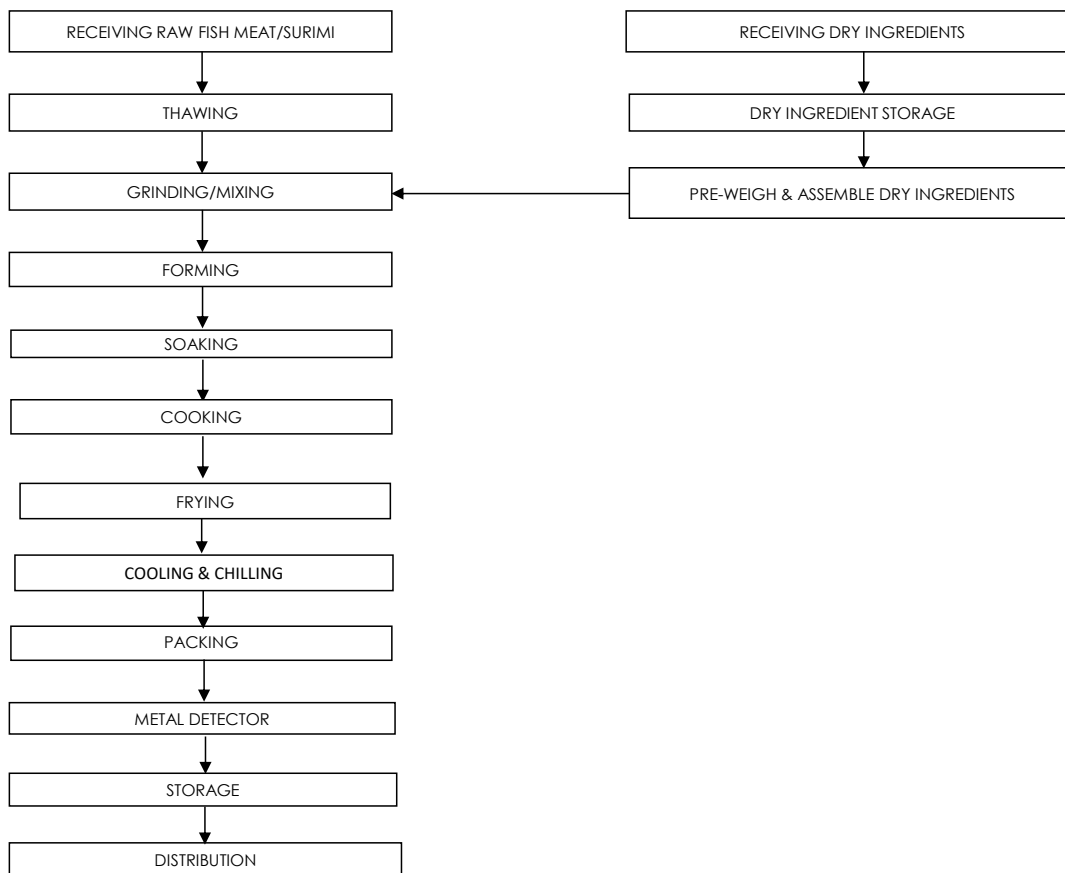
Chemical Specifications	Tolerance Limits
Arsenic (ppm)	≤ 1
Lead (ppm)	≤ 2
Mercury (ppm)	≤ 0.5
Cadmium (ppm)	≤ 1

### Food Safety Characteristic

**All packed products passed through a calibrated metal detector**

Detection Limits: Ferrous <2.0mm, Non-Ferrous <2.5mm. Stainless Steel <3.5mm

### Process Flowchart



### Target Consumer

General Public through Retailer and Super/Hypermarket

合利发私人有限公司 HA LI FA PTE LTD  
 No. 257 Pandan Loop Singapore 128434 Tel: (65) 6773 6209 Fax: (65) 6774 2010  
 Email: sales@halifa-bobo.com Website: www.halifa-bobo.com

