



## PRODUCT SPECIFICATION

### Product Name

English Name : Flat Ngoh Hiang (92-97g)  
Chinese Name : 扁香

### Product Brand

Brand : NIL

### Product Descriptions

Colour : Golden Brown  
Shape : Flat Rectangle Shape  
General : Surimi-based Fillings Wrapped with Bean Curd Skin

### Ingredients / Compositions

Fish Meat [Fish Meat, Sugar, Egg White Powder, Stabilizer (E451i)], Vegetables (Onion, Carrot, Spring Onion, Garlic), Corn Flour, Modified Potato Starch (E1422), Soy Bean Curd Skin, Flavour Enhancer (E621), Sugar, Sesame Oil, Salt, White Pepper

### Allergen Advice

Contains : Fish, Egg and Soy

### Country of Origin

Product of Singapore / Made in Singapore

### Weight / Quantity

Per Piece : 92-97gm

### Available Packing Size

Net Weight : 10 pcs per pack

### Packaging Type & Materials

Primary Packaging : 3 Side Seal Nylon/ LLDPE Bag

合利发私人有限公司 HA LI FA PTE LTD  
No. 257 Pandan Loop Singapore 128434 Tel: (65) 6773 6209 Fax: (65) 6774 2010  
Email: sales@halifa-bobo.com Website: www.halifa-bobo.com





### Storage & Distribution / Shelf Life

Storage & Distribution : Chilled, 0°C - 4°C  
 Shelf Life : 5 Days  
 (cook before consumption)

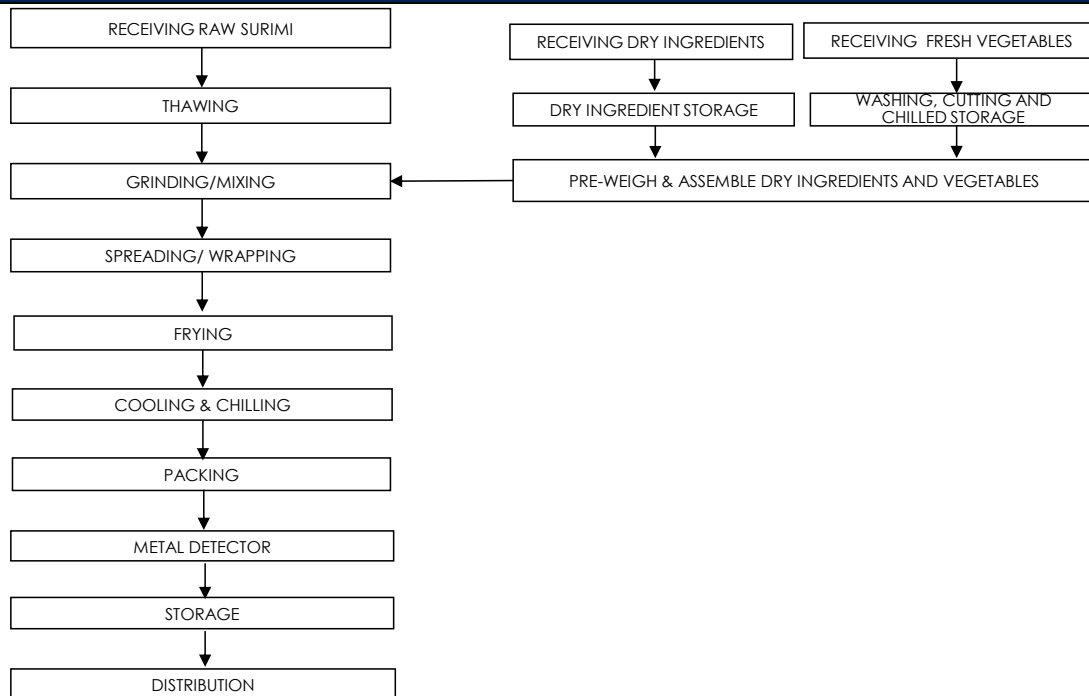
Microbiological Specifications	Tolerance Limits
Aerobic Count (cfu/g)	< 1.0 x 10 <sup>5</sup>
Enterobacteriac (cfu/g)	< 1.0 x 10 <sup>2</sup>
Escherichia coli (cfu/g)	< 20
Staphylococcus aureus (cfu/g)	< 20
Salmonella spp	Absent in 25gm
Vibrio parahaemolyticus	Absent in 25gm

Chemical Specification	Tolerance Limits
Arsenic, As (ppm)	≤ 1
Lead, Pb (ppm)	≤ 2
Mercury, Hg (ppm)	≤ 0.5
Cadmium, Cd (ppm)	≤ 1

### Food Safety Characteristic

**All packed products passed through a calibrated metal detector**  
 Detection Limits: Ferrous <2.0mm, Non-Ferrous <2.5mm. Stainless Steel <3.5mm

### Process Flowchart



### Target Consumer

General Public through Retailer and Super/Hypermarket

合利发私人有限公司 HA LI FA PTE LTD  
 No. 257 Pandan Loop Singapore 128434 Tel: (65) 6773 6209 Fax: (65) 6774 2010  
 Email: sales@halifa-bobo.com Website: www.halifa-bobo.com

